

A Venture of :



Corporate Office :

**SAI PURVI INFRASTRUCTURE**

Ground Floor, No.1, Sy. No 245/4, Gunjur Main Road,  
Gunjur, Bengaluru -560087

Site Address

No. 11/3, Opposite Eco Life Apartment,  
Panathur Main Road, Belagere Road,  
Varthur, Bengaluru - 560087

For enquiries:  
**+91 89714 30683**

Web:  
[www.saipurviinfrastructures.com](http://www.saipurviinfrastructures.com)

Email:  
[info@saipurviinfrastructures.com](mailto:info@saipurviinfrastructures.com)



Scan QR Code to visit website



Scan QR Code to download brochure

RERA REGD # : PRMKARERA1251446PR200924007055

Architect:  
**Yukti Consultants**  
Architecture, Engineering Interiors,  
Bangalore.

Disclaimer: Images, plans, drawings, renderings, perspectives, amenities and features mentioned herein are only indicative of the kind of development proposed.  
The developers reserve the right to make changes without prior notice or obligation.

Project by :



YOUR MODERN OASIS WITH A LOTUS TOUCH.



**arvindam** <sup>PURVI</sup>

LUXURY 3 BHK PREMIUM RESIDENCES

RERA REGD # : PRMKARERA1251446PR200924007055



HOME

IS WHERE THE HEART IS.

arvindam<sup>PURVI</sup>  
YOUR MODERN OASIS

Sai Purvi Infrastructure stands as a beacon of excellence in the real estate industry, epitomizing unmatched quality, unwavering commitment, and an impressive portfolio of properties. Renowned for our impeccable craftsmanship and attention to detail, Sai Purvi Infrastructure has earned a stellar reputation for delivering projects that redefine luxury and comfort.

With a dedicated team of professionals, we exhibit an extraordinary passion for our work, ensuring that each property we create is a masterpiece in its own right. Our commitment to quality is reflected not only in our superior construction standards but also in the thoughtful design, innovative features, and sustainable practices incorporated into every project.

Sai Purvi Infrastructure takes pride in offering a diverse range of properties, from elegant residential complexes to commercial spaces that seamlessly blend functionality with aesthetics. Each property is a testament to our vision of creating spaces that enhance the quality of life for our residents and add value to the community.

With Sai Purvi Infrastructure, you can expect nothing short of excellence, making them the epitome of trust and quality in the real estate realm.







MAXIMUM  
**open**  
SPACE

LARGE  
**green**  
AREAS

100%  
**vaastu**  
COMPLIANCE

arvindam PURVI 

WELCOME HOME TO UNMATCHED  
**ELEGANCE**

At the core of the city, we've created something greater than a mere architectural wonder. Purvi Arvindam stands as proof that a residence transcends its physical confines, serving as an emotional sanctuary, a bastion of coziness, and a tapestry woven with treasured memories.

Our 3 BHK luxury apartments serve as the backdrop to your life's most intimate moments. They are conceived with a vision to provide comfort, foster belonging, and enhance your everyday living experience.







PURVI  
arvindam



ELEGANCE  
**PERSONIFIED**  
YOUR LUXURIOUS  
ABODE AWAITS

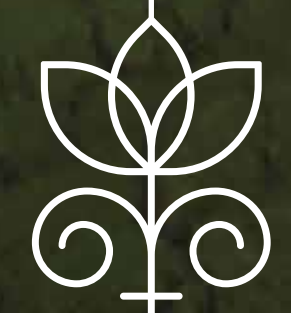


At Purvi Arvindam, every corner is designed to echo your heartbeat, every space is tailored to nurture your dreams.

Here, you don't just reside, you belong. Welcome to a place where your heart truly finds its home!

Experience the perfect balance of urban vibrancy and residential tranquility at Purvi Arvindam. Here, you're at the center of it all, yet away from the city's chaos. Welcome to a lifestyle that's as dynamic as the city it resides in.

REDEFINING THE  
**HEIGHTS**  
OF QUALITY LIVING





# MASTER PLAN

At Purvi Arvindam, we believe that a great living experience is all about the details. That's why our master plan includes an extensive list of amenities and features, all meticulously designed and strategically placed for your convenience and enjoyment.

## YOUR GATEWAY TO CITY-CENTRIC LIVING

- |                             |                                |
|-----------------------------|--------------------------------|
| 01 - Entry                  | 15 - Open Air Theatre          |
| 02 - Exit                   | 16 - Shaded Gazebo             |
| 03 - Security               | 17 - Jogging Track             |
| 04 - Pavilion Leisure       | 18 - Seating Area              |
| 05 - Shaded Gazebo          | 19 - Floral Garden             |
| 06 - Kids Play Area         | 20 - Pets Park                 |
| 07 - Shuttle Court          | 21 - Swimming Pool             |
| 08 - Kids Play Area on Lawn | 22 - Toddler's Pool            |
| 09 - Herbal Garden          | 23 - Pool Deck                 |
| 10 - Seat                   | 24 - Indoor Gym Ground Floor   |
| 11 - Dribble Court          | 25 - Waiting Lounge/ Reception |
| 12 - Inter Active Zone      | 26 - Indoor Games              |
| 13 - Kids Play area         | 27 - Party Hall                |
| 14 - Hop Scotch             | 28 - Wide Driveway             |



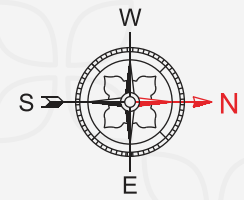


# FLOOR PLAN

CRAFTED WITH CARE:  
YOUR BLUEPRINT FOR EXCEPTIONAL LIVING

## AREA STATEMENT EIGHTH FLOOR

Flat No	Facing	Type	Carpet Area (SFT.)	Utility/Balcony (SFT.)	Builtup Area (SFT.)	SBA (SFT.)
01	West	3 BHK	1157	193	1424	1780
02	North	3 BHK	1199	202	1480	1850
03	North	3 BHK	1264	211	1560	1950
04	East	3 BHK	1161	175	1412	1765
05	East	3 BHK	1161	175	1412	1765
06	East	3 BHK	1114	132	1324	1655
07	West	3 BHK	1151	145	1376	1720
08	West	3 BHK	1118	193	1384	1730



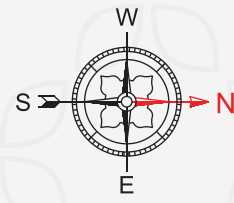


# FLOOR PLAN

ELEVATE YOUR LIFESTYLE:  
DISCOVER OUR SPACIOUS FLOOR PLANS

## AREA STATEMENT GROUND FLOOR

Flat No	Facing	Type	Carpet Area (SFT.)	Utility/Balcony (SFT.)	Builtup Area (SFT.)	SBA (SFT.)
01	West	3 BHK	1157	193	1424	1780
02	North	3 BHK	1199	202	1480	1850
03	North	3 BHK	1264	211	1560	1950
04	East	3 BHK	1161	175	1412	1765
05	East	3 BHK	1161	175	1412	1765
06	East	3 BHK	1114	132	1324	1655
07	West	3 BHK	1151	145	1376	1720
08	West	3 BHK	1118	193	1384	1730





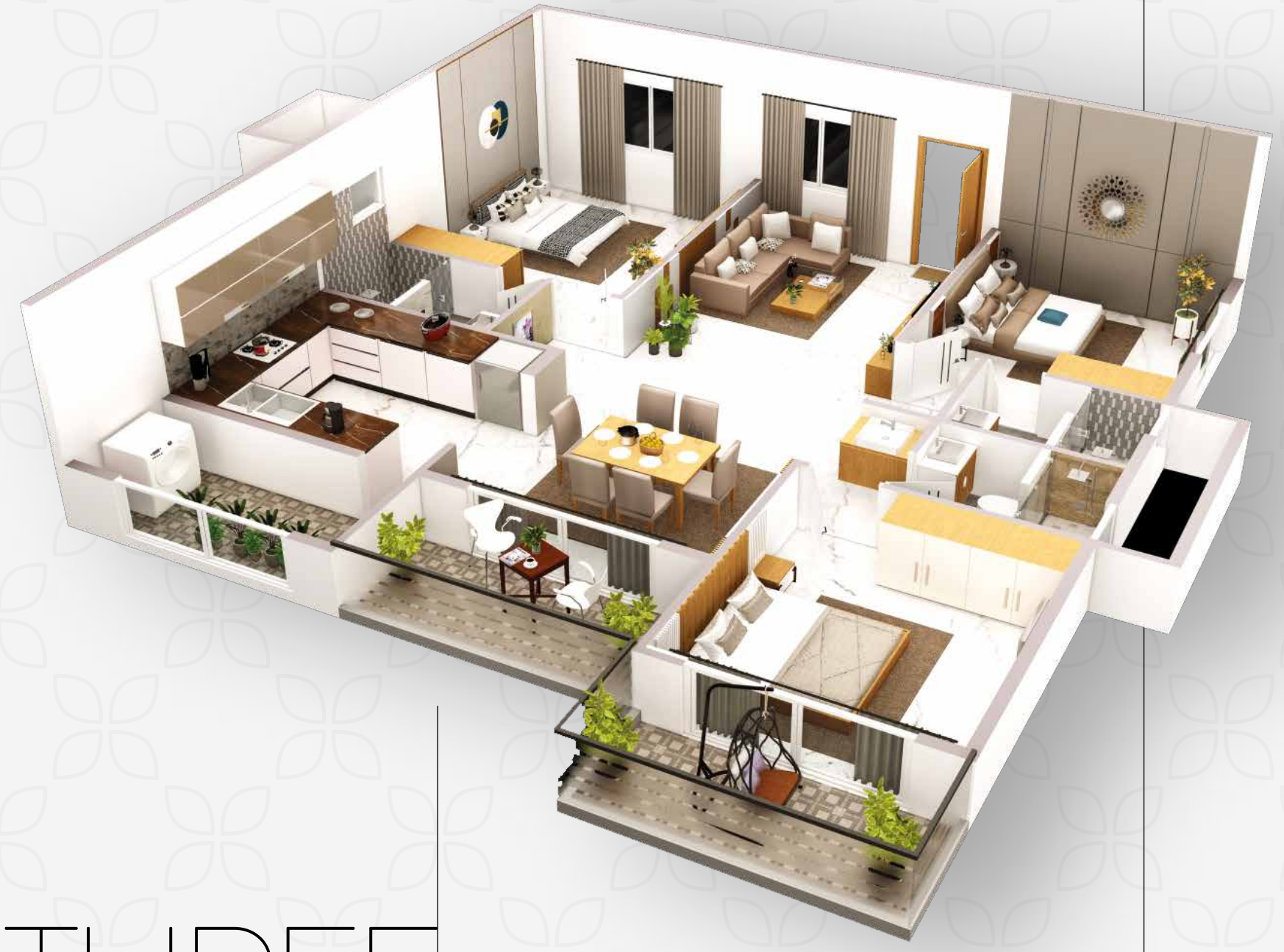




# ISOMETRIC VIEWS



THREE  
BHK - 1720 SQ.FT.



THREE  
BHK - 1730 SQ.FT.





**EXPERIENCE THE PURVI ARVINDAM LIFESTYLE,  
WHERE EVERY DETAIL IS CRAFTED WITH YOU IN MIND.**

Immerse yourself in the serene ambiance of our meticulously designed swimming pool. Enclosed by lush landscapes, it's not just a pool - it's your private retreat. Whether you want to unwind after a long day or engage in a refreshing workout, this tranquil oasis offers a perfect escape from the city's hustle and bustle. Dive into a world of calm and relaxation, right at your doorstep at Purvi Arvindam.

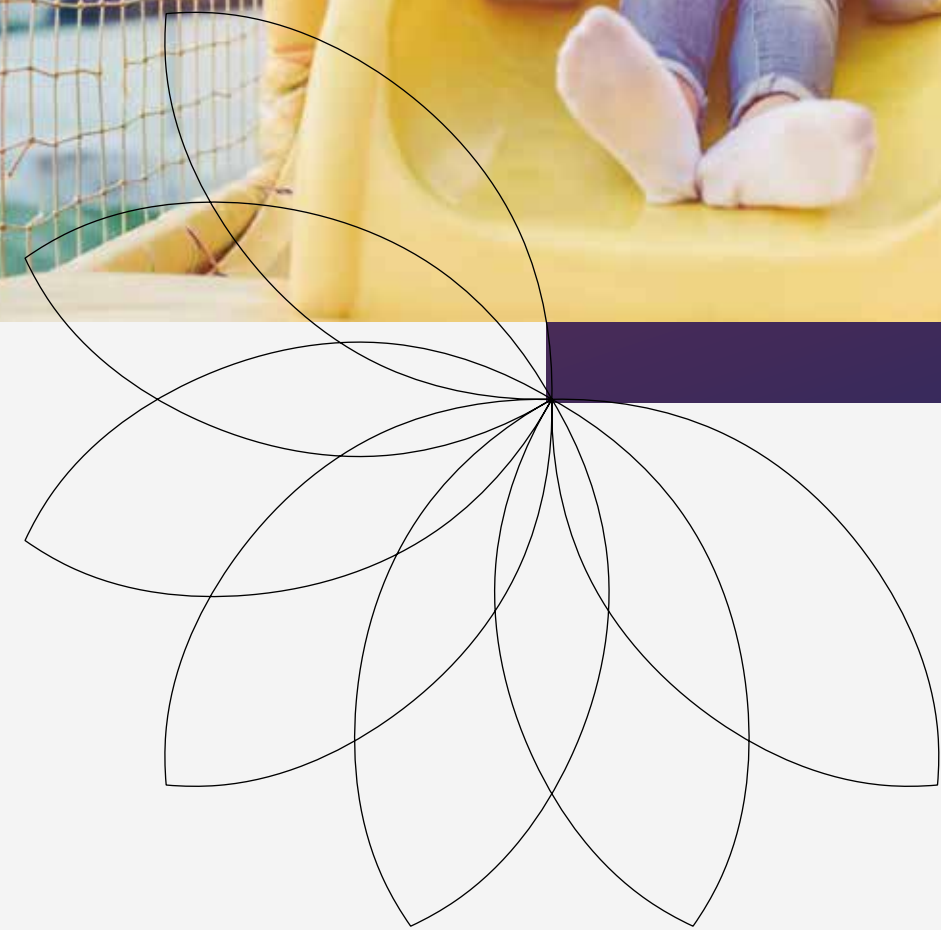


MAKE A  
**SPLASH**  
EMBRACE LEISURE  
AT ITS FINEST





YOUR  
**PLAYGROUND**  
OF ENDLESS POSSIBILITIES



At Purvi Arvindam, we understand that home is more than just a place to live - it's a reflection of who you are. We've crafted a residential experience that epitomizes elegance and sophistication, ensuring the address you call home is one you can take pride in.

Nestled in the heart of Bengaluru, Purvi Arvindam is an emblem of luxury living, blending modern design with unparalleled amenities. It's not just an address, it's a testament to your aspirational lifestyle.





ELEVATE YOUR  
**GAME**  
ELEVATE YOUR  
**LIFESTYLE**







THE ADDRESS YOU  
**DESERVE**

At Purvi Arvindam, we believe that the true measure of luxury lies in the details. That's why we're committed to providing the highest standards of quality in every aspect of our construction.

From the choice of materials to the execution of every design element, our specifications are meticulously crafted to ensure your home is built to last, without compromising on style or comfort.

Experience the Purvi Arvindam difference, where quality is not just a promise, but a way of life.





UNCOMPROMISING  
**EXCELLENCE**  
CRAFTING PERFECTION IN EVERY DETAIL

Welcome to Purvi Arvindam, where the essence of grandeur is captured in every fabric of its existence. Here, beauty isn't just seen, it's felt. It's an experience that transcends the ordinary, taking you on a journey to new heights of sophistication.

Every curve, every contour, every corner of Purvi Arvindam reveals itself, showcasing a testament to our commitment to excellence. This isn't just a view; it's a revelation of our vision - an urban haven that stands tall amidst the skyline, embodying the essence of refined living.



 **STRUCTURE**

R.C.C. framed structure

 **WALLS**

6" solid cement blocks for exterior walls & 4" solid cement blocks for internal walls.

 **DOORS**

Main Door –Re-Veneer Finish, 8ft Hight with Smart Electric Door Lock System for Main Door, Yale/equivalent brands. 7ft Hight Bedroom and Toilets Doors with Laminate finish.

 **WINDOWS**

Upvc Three track windows and shutters with plain glass.

 **FLOORING**

800mm x 800mm Vitrified tiles flooring for living, dining and Bedrooms, Ceramic tiles for balconies ,with Anti - skid tiles, in toilets of a minimum size of 600mm x 1200mm from Zealtop/AgI or equivalent.

 **KITCHEN**

Provision for Aqua - guard point, Provision for washing, machine in utility area, (stainless steel sink and Kitchen Platform, Kitchen wall tiles not providing as per Architect's designs).

 **TOILETS**

Colored glazed tiles up to 7ft. height fitting & Accessories - EWC commode and wash basins (white color) of Kohler/Jaquar or equivalent make. Hot and cold Single Liver Diverter, pillar cock, health faucet in each toilet of half turn of standard make like jaguar / Kohler brands.

 **COMMON AREA**

Tiles Flooring in Corridor and SS Railing with glassy deigned and Concrete Staircases as per architect's designs.

 **WATER**


Water Supply from Borewells with the overhead tank and sump.

 **FINISHING**

Exterior Walls -One coat of primer and two coats of Cement paints.

 **PAINTING**

Interior Walls and ceiling in OBD external walls - one coat of primer and two coats of cement paint. All railings in Enamel paint.

 **LIFT**

6 capacity passengers lift automatic and make will be Otis/Kone or equivalent.

A COMMITMENT TO EXCELLENCE: SETTING THE STANDARD IN QUALITY

 **ELECTRICAL**

Power Supply of 4KVA for 3 BHK apartments. Concealed conduits with good quality Copper wire -Anchor or equivalent, Modular electrical switches - Great white or equivalent. One Earth Leakage Circuit Breaker (ELCB) for each apartment. One Miniature Circuit Breaker (MCB) for each room. Points for Geyser in toilets, Washing Machine in utility, Refrigerator in Kitchen or Dining, Microwave Oven in Kitchen, Air Conditioner in Master Bed Room, TV & Telephone Point at Living and master bedrooms.

 **BACKUP GENERATOR**

Standby generator for light in common area, lifts and pumps 1 KVA power backup to each apartment.

 **SECURITY**

Round the clock security, security room, club house and other apartments.

 **INFRA-STRUCTURAL FACILITIES**

Sewage Treatment Plant, Rainwater harvesting pits. Compound wall .



ETHEREAL  
**ELEVATION**  
EMBRACE THE GRANDEUR



Every curve, every contour, every corner of Purvi Arvindam reveals itself, showcasing a testament to our commitment to excellence. This isn't just a view; it's a revelation of our vision - an urban haven that stands tall amidst the skyline, embodying the essence of refined living.





THE CENTER OF EVERYTHING

# YOU LOVE

At Purvi Arvindam, life blossoms at the heart of it all. Strategically situated in Bengaluru's vibrant cityscape, we offer you the best of both worlds - the buzz of city life and the tranquility of a serene neighborhood. Our prime location ensures that you're never too far from what you love. Be it top-notch educational institutions, healthcare centers, bustling shopping malls, or thriving business hubs, everything you need is just a stone's throw away. With excellent connectivity and a plethora of nearby amenities, Purvi Arvindam truly stands as the center of your world.

## SCHOOLS

- VIBGYOR
- NATIONAL PUBLIC SCHOOL
- CHRYSALIS
- PNC & ZEE
- MVJ COLLEGE OF ENGINEERING
- DEEN ACADEMY
- JAIN HERITAGE INTL. SCHOOL
- ORCHIDS INTL. SCHOOL
- SRUSTI GLOBAL SCHOOL
- LAKE MOUNT FORT
- DIYA ACADEMY
- SEA COLLEGE
- NARAYANA SCHOOL
- CHAITHANYA SCHOOL

## OFFICES

- TATA ELXSI
- BEARYS GLOBAL RESEARCH
- SIEMENS LIMITED
- GRIND WELL
- GR TECH PARK
- ITPL
- UNILVER
- KIADB
- NOVO NORDISK
- TESCO
- TCS
- ACCENTURE
- I-GATE
- L&T
- UTC AEROSPACE SYSTEMS
- SAP
- RMZ

## SHOPPING MALLS

- SBR INOX
- ORION UPTOWN
- PARK SQUARE MALL
- FORUM VALUE MALL
- INORBIT MALL
- VR MALL
- PHOENIX MALL

## HOSPITALS

- AXIS HOSPITAL
- SATHYA SAI SU
- PER SPECIALITY HOSPITAL
- VYDEHI HOSPITAL
- MANIPAL HOSPITAL WHITEFIELD
- SHANKARA EYE HOSPITAL
- YASHOMATI HOSPITAL
- CLOUD 9 CLINIC
- MIRACLE HOSPITAL
- NARAYAN MULTISPECIALTY HOSPITAL

## HOTELS

- SHERATON 4 POINTS
- TAJ VIVANTA
- THE DEN
- JW MARIOT HOTEL
- FAT CHEF
- HOLIDAY IN
- MAINLAND CHINA
- GINGER HOTEL
- ZURI

