

Project by :



YOUR MODERN OASIS WITH A LOTUS TOUCH.



SAI PURVI
arvindam

LUXURY 3 BHK PREMIUM RESIDENCES



HOME

IS WHERE THE HEART IS.

arvindam SAI PURVI
YOUR MODERN OASIS

Sai Purvi Properties stands as a beacon of excellence in the real estate industry, epitomizing unmatched quality, unwavering commitment, and an impressive portfolio of properties. Renowned for our impeccable craftsmanship and attention to detail, Sai Purvi Properties has earned a stellar reputation for delivering projects that redefine luxury and comfort.

With a dedicated team of professionals, we exhibit an extraordinary passion for our work, ensuring that each property we create is a masterpiece in its own right. Our commitment to quality is reflected not only in our superior construction standards but also in the thoughtful design, innovative features, and sustainable practices incorporated into every project.

Sai Purvi Properties takes pride in offering a diverse range of properties, from elegant residential complexes to commercial spaces that seamlessly blend functionality with aesthetics. Each property is a testament to our vision of creating spaces that enhance the quality of life for our residents and add value to the community.

With Sai Purvi Properties, you can expect nothing short of excellence, making them the epitome of trust and quality in the real estate realm.





MAXIMUM
open
SPACE

LARGE
green
AREAS

100%
Vaastu
COMPLIANCE

arvindam SAI PURVI 

WELCOME HOME TO UNMATCHED
ELEGANCE

At the core of the city, we've created something greater than a mere architectural wonder. Sai Purvi Arvindam stands as proof that a residence transcends its physical confines, serving as an emotional sanctuary, a bastion of coziness, and a tapestry woven with treasured memories.

Our 3 BHK luxury apartments serve as the backdrop to your life's most intimate moments. They are conceived with a vision to provide comfort, foster belonging, and enhance your everyday living experience.





SAI PURVI

arvindam



ELEGANCE
PERSONIFIED
YOUR LUXURIOUS
ABODE AWAITS



At Sai Purvi Arvindam, every corner is designed to echo your heartbeat, every space is tailored to nurture your dreams.

Here, you don't just reside, you belong. Welcome to a place where your heart truly finds its home!

Experience the perfect balance of urban vibrancy and residential tranquility at Sai Purvi Arvindam. Here, you're at the center of it all, yet away from the city's chaos. Welcome to a lifestyle that's as dynamic as the city it resides in.

REDEFINING THE
HEIGHTS
OF QUALITY LIVING

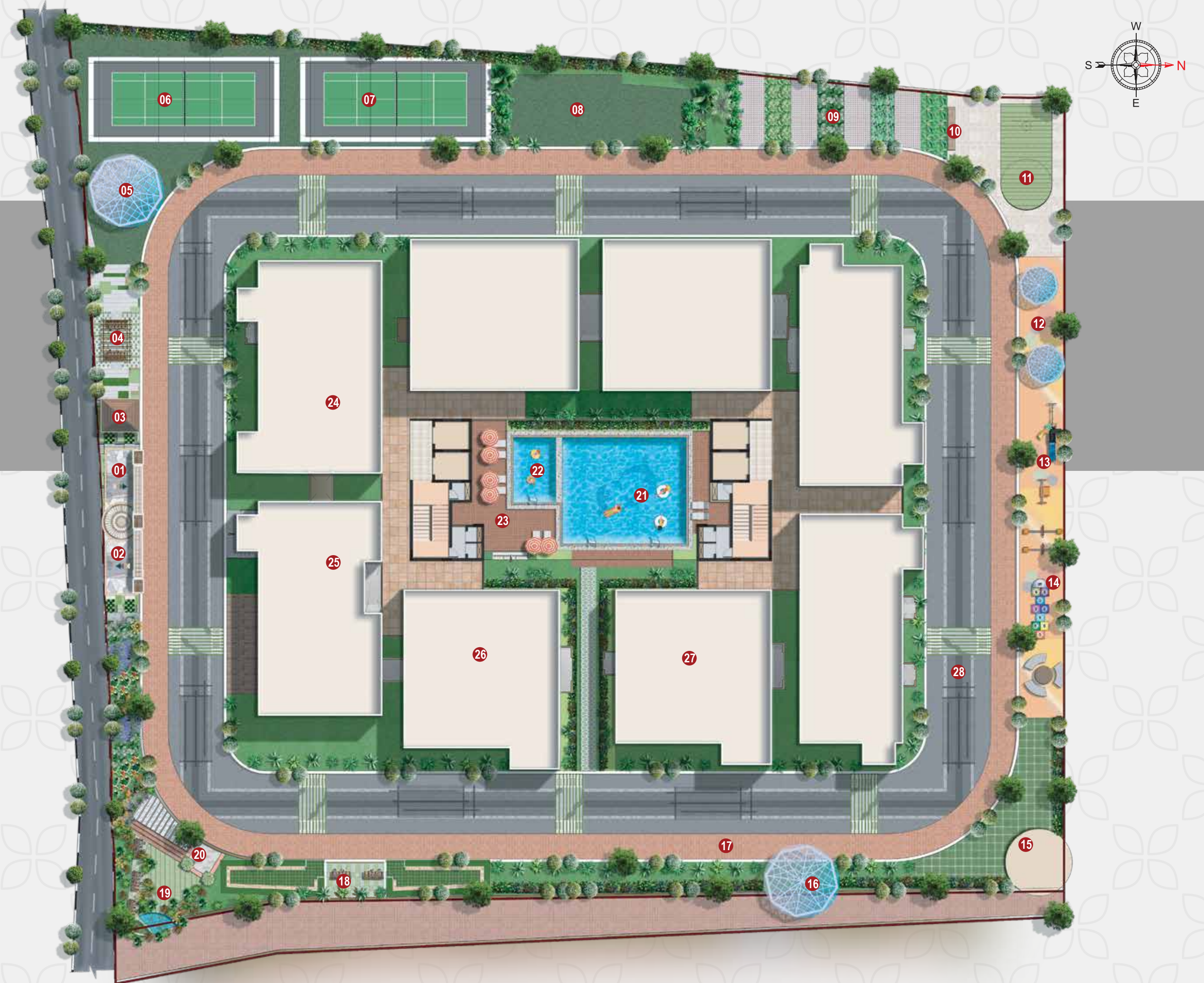


MASTER PLAN

At Sai Purvi Arvindam, we believe that a great living experience is all about the details. That's why our master plan includes an extensive list of amenities and features, all meticulously designed and strategically placed for your convenience and enjoyment.

YOUR GATEWAY TO CITY-CENTRIC LIVING

- | | |
|-----------------------------|--------------------------------|
| 01 - Entry | 15 - Open Air Theatre |
| 02 - Exit | 16 - Shaded Gazebo |
| 03 - Security | 17 - Jogging Track |
| 04 - Pavilion Leisure | 18 - Seating Area |
| 05 - Seating | 19 - Floral Garden |
| 06 - Shuttle Court | 20 - Pets Park |
| 07 - Shuttle Court | 21 - Swimming Pool |
| 08 - Kids Play Area on Lawn | 22 - Toddler's Pool |
| 09 - Herbal Garden | 23 - Pool Deck |
| 10 - Seat | 24 - Indoor Gym Ground Floor |
| 11 - Dribble Court | 25 - Waiting Lounge/ Reception |
| 12 - Inter Active Zone | 26 - Indoor Games |
| 13 - Kids Play area | 27 - Yoga / Spa |
| 14 - Hop Scotch | 28 - Wide Driveway |

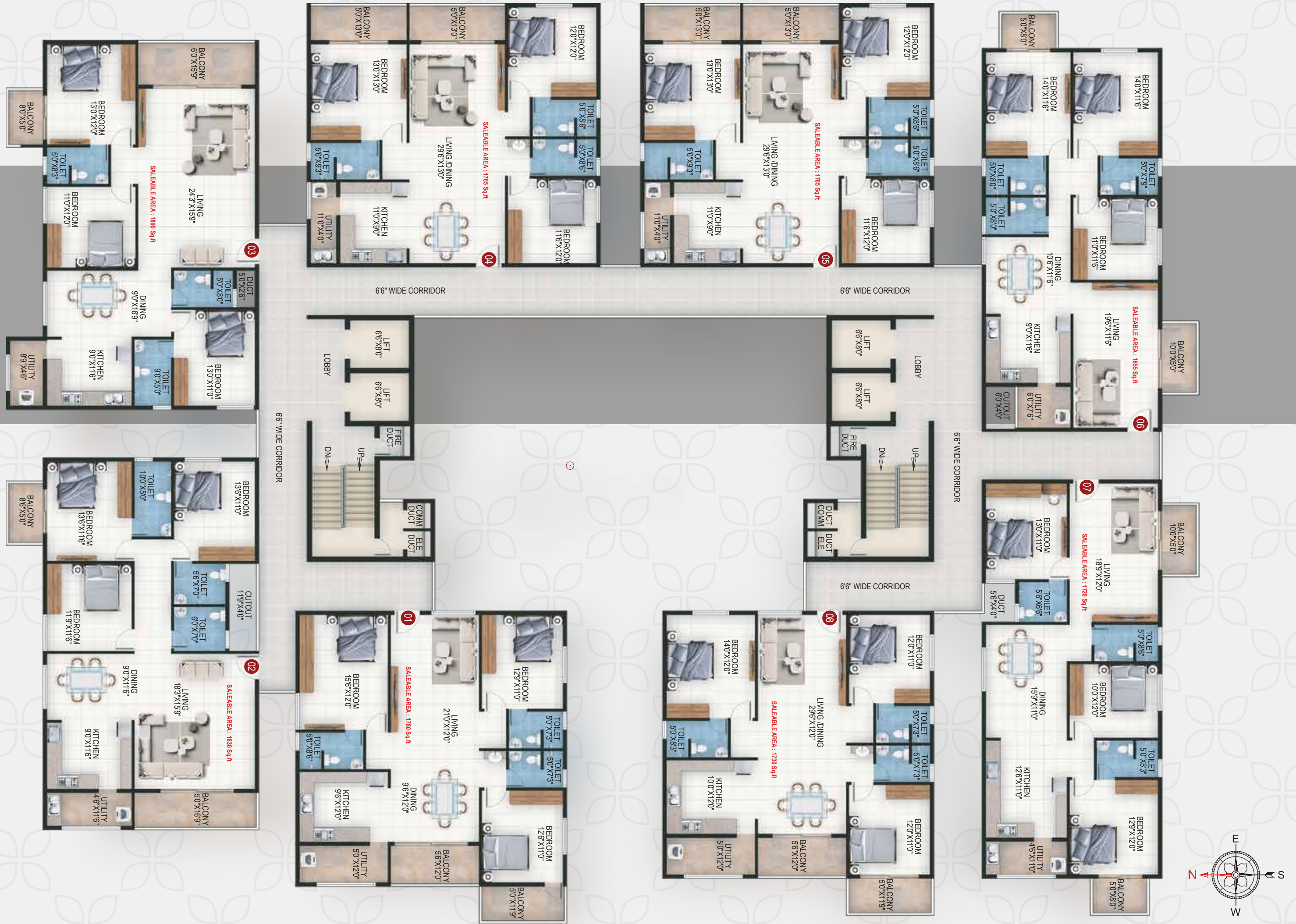


FLOOR PLAN

CRAFTED WITH CARE:
YOUR BLUEPRINT FOR EXCEPTIONAL LIVING

AREA STATEMENT EIGHTH FLOOR

AREA	FACING	TYPE	AREA (SFT)	GROUND
01	West	3 Bhk	1780	
02	North	3 Bhk	1850	
03	North	3 Bhk	1890	
04	East	3 Bhk	1765	
05	East	3 Bhk	1765	
06	East	3 Bhk	1655	
07	West	3 Bhk	1720	
08	West	3 Bhk	1730	

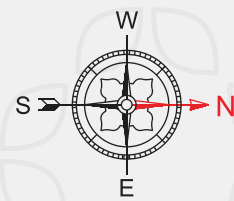


FLOOR PLAN

ELEVATE YOUR LIFESTYLE:
DISCOVER OUR SPACIOUS FLOOR PLANS

AREA STATEMENT GROUND FLOOR

AREA	FACING	TYPE	AREA (SFT) GROUND
01	--	--	--
02	--	--	--
03	--	--	--
04	East	3 Bhk	1765
05	East	3 Bhk	1765
06	East	3 Bhk	1655
07	West	3 Bhk	1720
08	--	--	--



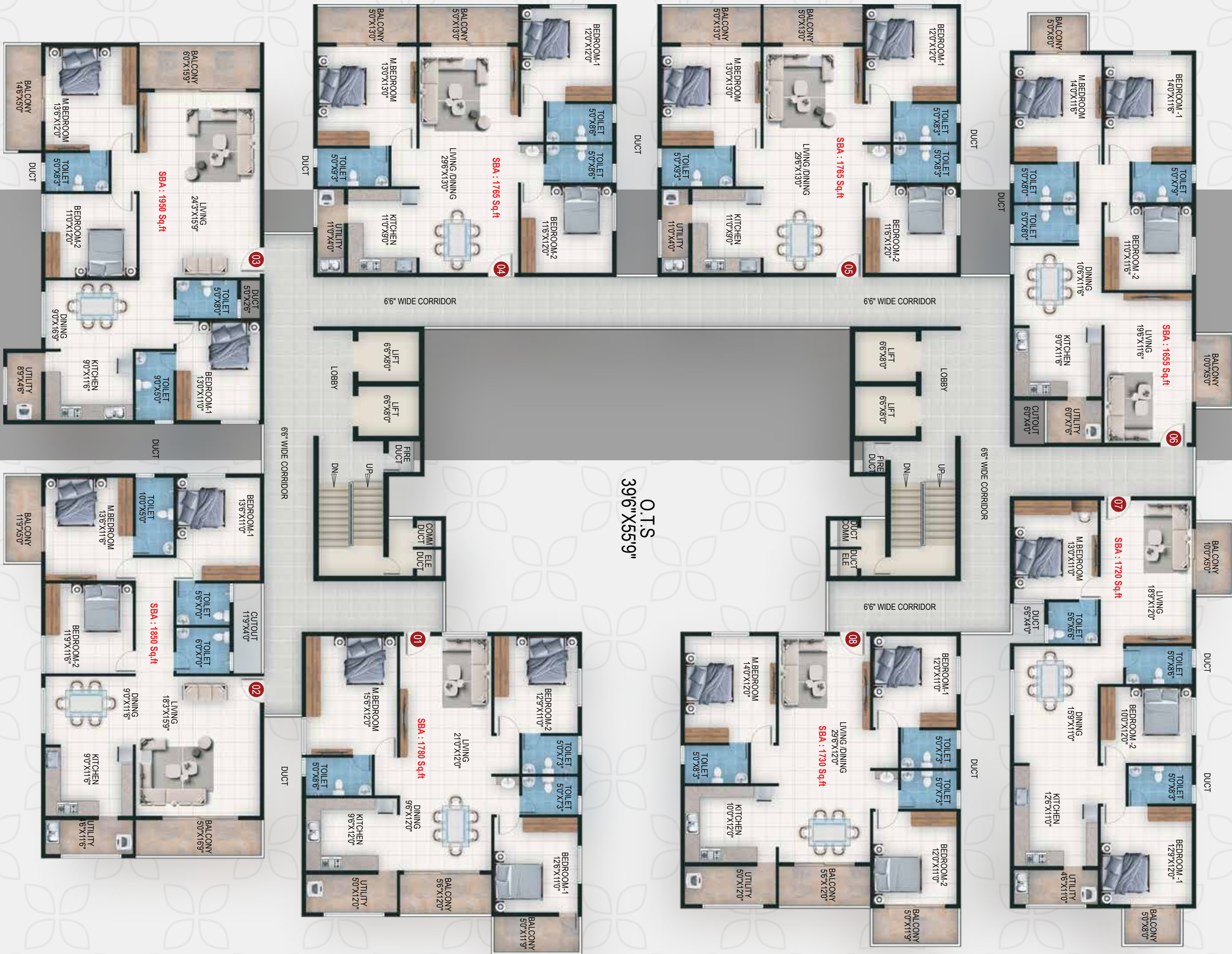
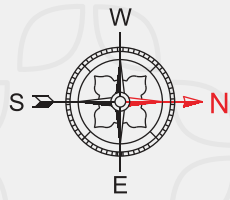
FLOOR PLAN

LUXURY LIVING, TAILORED TO YOU:
CHOOSE YOUR PERFECT LAYOUT



AREA STATEMENT EIGHTH FLOOR

AREA	FACING	TYPE	AREA (SFT) GROUND
01	West	3 Bhk	1780
02	North	3 Bhk	1850
03	North	3 Bhk	1950
04	East	3 Bhk	1765
05	East	3 Bhk	1765
06	East	3 Bhk	1655
07	West	3 Bhk	1720
08	West	3 Bhk	1730



ISOMETRIC VIEWS



THREE

BHK - 1450 SQ.FT.



THREE

BHK - 1750 SQ.FT.

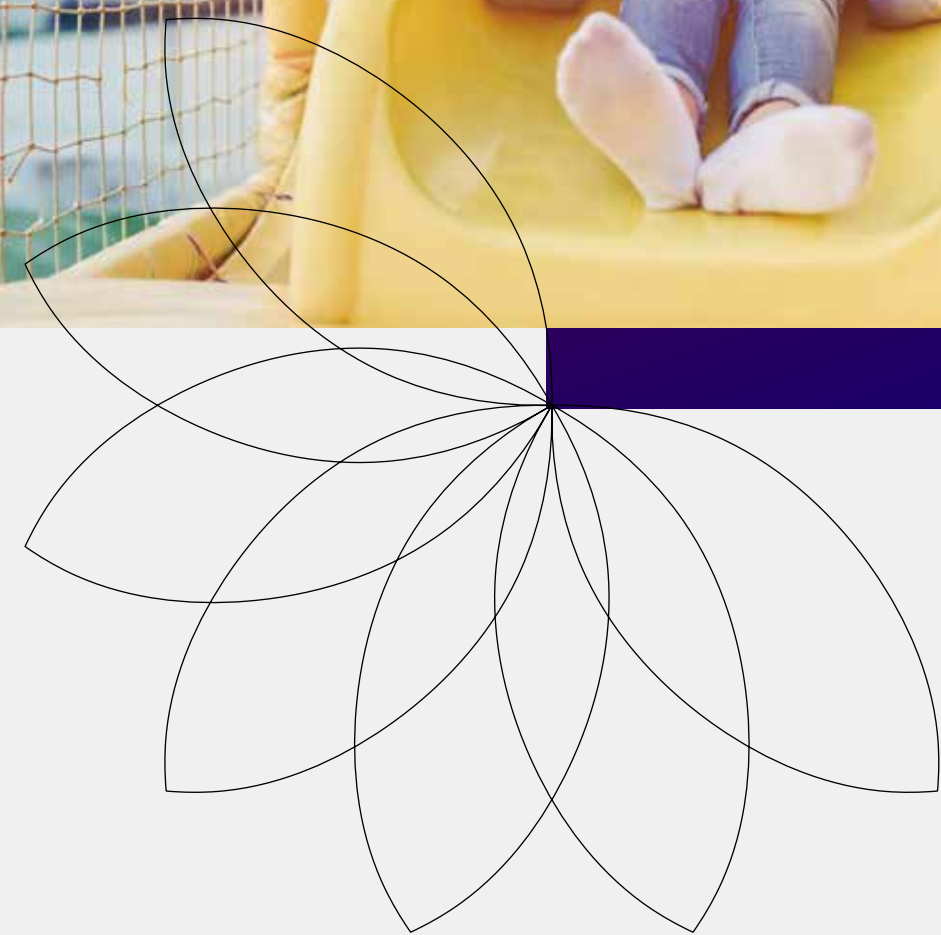
**EXPERIENCE THE SAI PURVI ARVINDAM LIFESTYLE,
WHERE EVERY DETAIL IS CRAFTED WITH YOU IN MIND.**

Immerse yourself in the serene ambiance of our meticulously designed swimming pool. Enclosed by lush landscapes, it's not just a pool - it's your private retreat. Whether you want to unwind after a long day or engage in a refreshing workout, this tranquil oasis offers a perfect escape from the city's hustle and bustle. Dive into a world of calm and relaxation, right at your doorstep at Sai Purvi Arvindam.

MAKE A
SPLASH
EMBRACE LEISURE
AT ITS FINEST



YOUR
PLAYGROUND
OF ENDLESS POSSIBILITIES



At Sai Purvi Arvindam, we understand that home is more than just a place to live - it's a reflection of who you are. We've crafted a residential experience that epitomizes elegance and sophistication, ensuring the address you call home is one you can take pride in.

Nestled in the heart of Bengaluru, Sai Purvi Arvindam is an emblem of luxury living, blending modern design with unparalleled amenities. It's not just an address, it's a testament to your aspirational lifestyle.



ELEVATE YOUR
GAME
ELEVATE YOUR
LIFESTYLE





THE ADDRESS YOU
DESERVE

At Sai Purvi Arvindam, we believe that the true measure of luxury lies in the details. That's why we're committed to providing the highest standards of quality in every aspect of our construction.

From the choice of materials to the execution of every design element, our specifications are meticulously crafted to ensure your home is built to last, without compromising on style or comfort.

Experience the Sai Purvi Arvindam difference, where quality is not just a promise, but a way of life.



UNCOMPROMISING
EXCELLENCE
CRAFTING PERFECTION IN EVERY DETAIL

Welcome to Sai Purvi Arvindam, where the essence of grandeur is captured in every fabric of its existence. Here, beauty isn't just seen, it's felt. It's an experience that transcends the ordinary, taking you on a journey to new heights of sophistication.



STRUCTURE

R.C.C. framed structure

WALLS

6" solid cement blocks for exterior walls & 4" solid cement blocks for internal walls.

DOORS

Main Door –Re-Veneer Finish, 8ft Hight with Smart Electric Door Lock System for Main Door, Yale/equivalent brands. 7ft Hight Bedroom and Toilets Doors with Laminate finish.

WINDOWS

Upvc Three track windows and shutters with plain glass.

FLOORING

800mm x 800mm Vitrified tiles flooring for living, dining and Bedrooms, Ceramic tiles for balconies ,with Anti - skid tiles, in toilets of a minimum size of 600mm x 1200mm from Zealtop/AgI or equivalent.

KITCHEN

Provision for Aqua - guard point, Provision for washing, machine in utility area, (stainless steel sink and Kitchen Platform, Kitchen wall tiles -not providing as per Architect's designs).

TOILETS

Colored glazed tiles up to 7ft. height fitting & Accessories - EWC commode and wash basins (white color) of Kohler/-Jaquar or equivalent make. Hot and cold Single Liver Diverter, pillar cock, health faucet in each toilet of half turn of standard make like jaguar / Kohler brands.

COMMON AREA

Tiles Flooring in Corridor and SS Railing with glassy deigned and Concrete Staircases as per architect's designs.

WATER

Water Supply from Borewells with the overhead tank and sump.

FINISHING

Exterior Walls -One coat of primer and two coats of Cement paints.

PAINTING

Interior Walls and ceiling in OBD external walls - one coat of primer and two coats of cement paint. All railings in Enamel paint.

LIFT

6 capacity passengers lift automatic and make will be Otis/Kone or equivalent.

A COMMITMENT TO EXCELLENCE: SETTING THE STANDARD IN QUALITY

ELECTRICAL

Power Supply of 3KVA for 2BHK and 4KVA for 3 BHK apartments.
Concealed conduits with good quality Copper wire -Anchor or equivalent, Modular electrical switches - Great white or equivalent.
One Earth Leakage Circuit Breaker (ELCB) for each apartment.
One Miniature Circuit Breaker (MCB) for each room.
Points for Geyser in toilets, Washing Machine in utility, Refrigerator in Kitchen or Dining, Microwave Oven in Kitchen, Air Conditioner in Master Bed Room, TV & Telephone Point at Living and master bedrooms.

BACKUP GENERATOR

Standby generator for light in common area, lifts and pumps 1 KVA power backup to each apartment.

SECURITY

Round the clock security, security room, club house and other apartments.

INFRA-STRUCTURAL FACILITIES

Sewage Treatment Plant, Rainwater harvesting pits. Compound wall .

ETHEREAL
ELEVATION
EMBRACE THE GRANDEUR



Every curve, every contour, every corner of Sai Purvi Arvindam reveals itself, showcasing a testament to our commitment to excellence. This isn't just a view; it's a revelation of our vision - an urban haven that stands tall amidst the skyline, embodying the essence of refined living.



THE CENTER OF EVERYTHING

YOU LOVE

At Sai Purvi Arvindam, life blossoms at the heart of it all. Strategically situated in Bengaluru's vibrant cityscape, we offer you the best of both worlds - the buzz of city life and the tranquility of a serene neighborhood. Our prime location ensures that you're never too far from what you love. Be it top-notch educational institutions, healthcare centers, bustling shopping malls, or thriving business hubs, everything you need is just a stone's throw away. With excellent connectivity and a plethora of nearby amenities, Sai Purvi Arvindam truly stands as the center of your world.

SCHOOLS

- VIBGYOR
- NATIONAL PUBLIC SCHOOL
- CHRYSALIS
- PNC & ZEE
- MVJ COLLEGE OF ENGINEERING
- DEEN ACADEMY
- JAIN HERITAGE INTL SCHOOL
- ORCHIDS INTL. SCHOOL
- SRUSTI GLOBAL SCHOOL
- LAKE MOUNT FORT
- DIYA ACADEMY
- SEA COLLEGE
- NARAYANA SCHOOL
- CHAITHANYA SCHOOL

OFFICES

- TATA ELXSI
- BEARYS GLOBAL RESEARCH
- SIEMENS LIMITED
- GRIND WELL
- GR TECH PARK
- ITPL
- UNILVER
- KIADB
- NOVO NORDISK
- TESCO
- TCS
- ACCENTURE
- I-GATE
- L&T
- UTC AEROSPACE SYSTEMS
- SAP
- RMZ

HOSPITALS

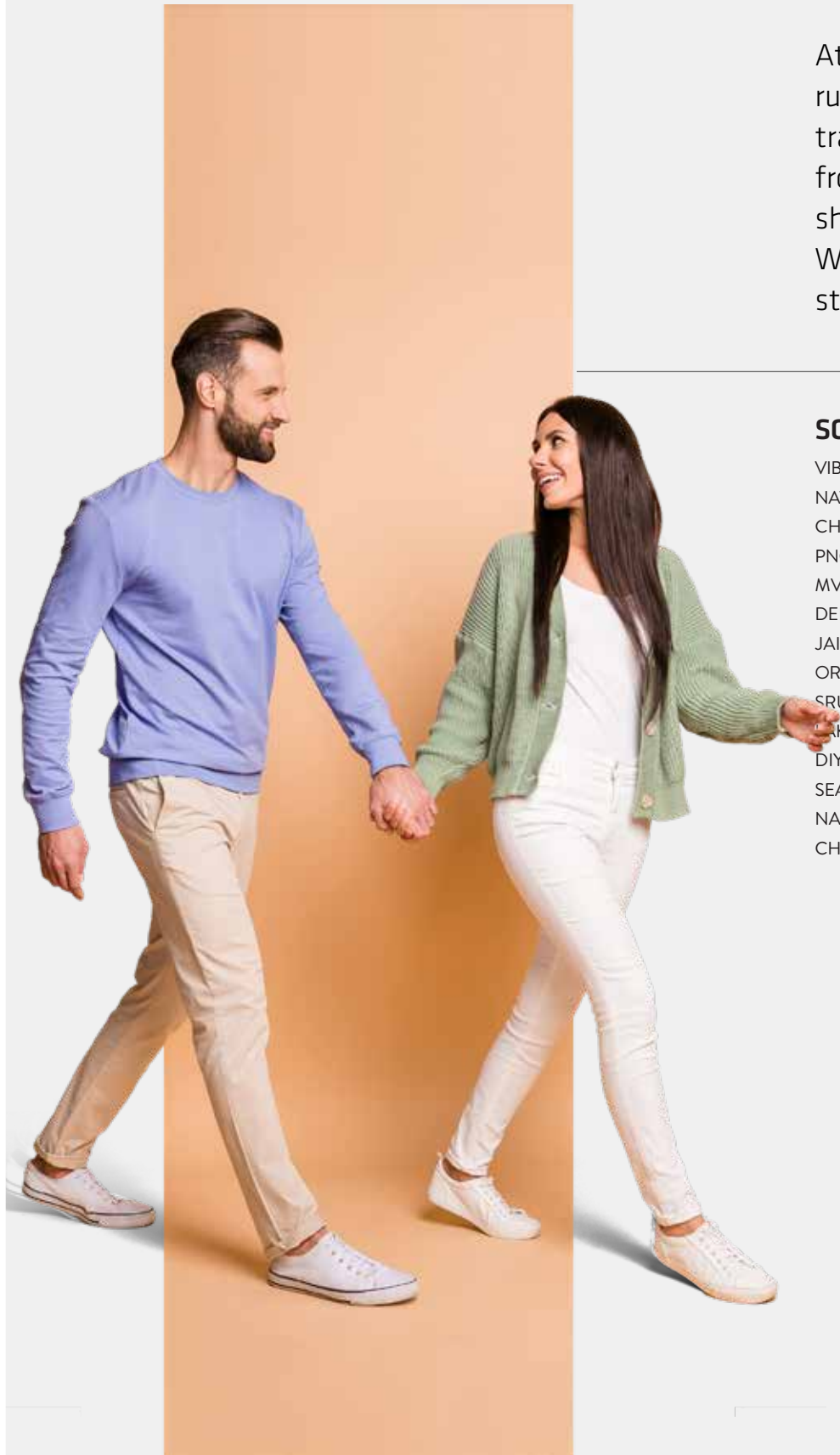
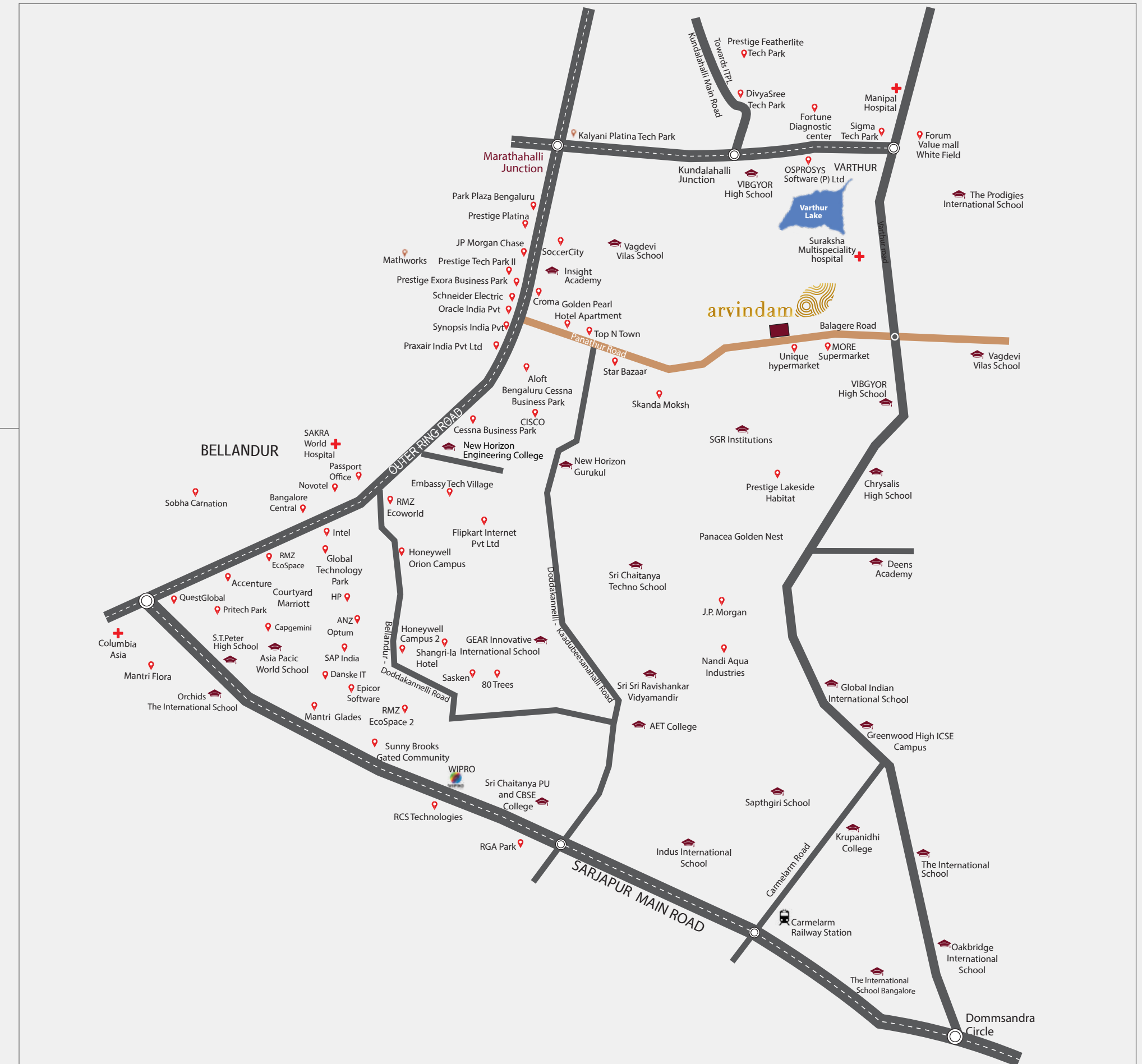
- AXIS HOSPITAL
- SATHYA SAI SU
- PER SPECIALITY HOSPITAL
- VYDEHI HOSPITAL
- MANIPAL HOSPITAL WHITEFIELD
- SHANKARA EYE HOSPITAL
- YASHOMATI HOSPITAL
- CLOUD 9 CLINIC
- MIRACLE HOSPITAL
- NARAYAN MULTISPECIALTY HOSPITAL

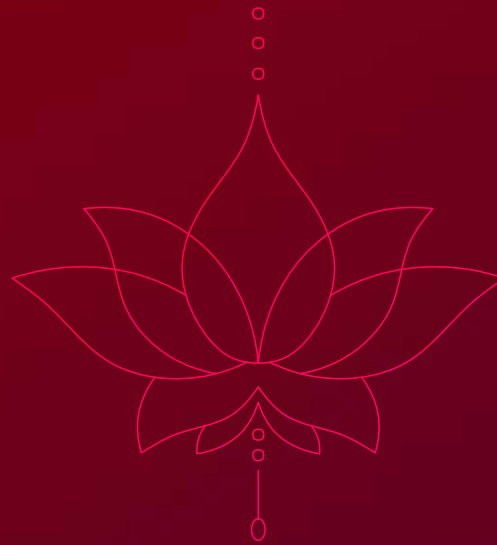
HOTELS

- SHERATON 4 POINTS
- TAJ VIVANTA
- THE DEN
- JW MARIOT HOTEL
- FAT CHEF
- HOLIDAY IN
- MAINLAND CHINA
- GINGER HOTEL
- ZURI

SHOPPING MALLS

- SBR INOX
- ORION UPTOWN
- PARK SQUARE MALL
- FORUM VALUE MALL
- INORBIT MALL
- VR MALL
- PHOENIX MALL





A Venture of :



Corporate Office :

SAI PURVI INFRASTRUCTURE

Ground Floor, No.1, Sy. No 245/4, Gunjur Main Road,
Gunjur, Bengaluru -560087

Site Address

No. 11/3, Opposite Eco Life Apartment,
Panathur Main Road, Belagere Road,
Varthur, Bengaluru - 560087

For enquiries:

+91 6366939126

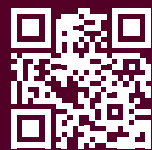
+91 6366939127

Web:

www.saipurviinfrastructures.com

Email:

info@saipurviinfrastructures.com



Scan QR Code to visit website



Scan QR Code to download brochure

Architect:

Yukti Consultants

Architecture, Engineering Interiors,
Bangalore.